

Joto Cap & Flat Press Manual

Model No.: E-HP-JCH-51

OPERATOR'S MANUAL



JOTOTM
Bringing images to lifeTM

Safety Instructions

For Use By Qualified Personnel Only

When using your Heat Press, basic precautions should always be followed, including the following:

Read all instructions.

Use heat press only for its intended use.

Keep the heat press dry at all times. Do not get the heat press wet to reduce the risk of electric shock. Do not store heat press in a wet or damp area.

Never pull cord to disconnect the power, grasp plug and pull to disconnect from power outlet.

Protect the power cord by keeping it away from hot surfaces. Do not allow objects to sit on top of the cord. This could cause damage to the cord and could become a fire hazard risk.

Do not operate heat press with a damaged cord or if the equipment has been damaged. Do not disassemble or attempt to repair the heat press to prevent risks to injury. Call or take it to a qualified service person for examination and repair. Incorrect assembly or repair could increase the risk of fire, electric shock, or injury to persons when the equipment is used.

Supervision is necessary for any heat press being used by or near children. Do not leave equipment unattended while connected.

Metal parts on the press can become hot. Burns may occur when touching hot metal parts. Take caution when using the heat press

To reduce the likelihood of circuit overload, It is recommended to use a dedicated circuit if possible.

Care should be taken to arrange the cord so that it cannot be pulled or tripped over.

To reduce the likelihood of circuit overload, do not operate other high voltage equipment on the same circuit.

If an extension cord is necessary, then a 20 amperage rated cord should be used. Cords rated for less amperage may overheat. Care should be taken to arrange the cord so that it cannot be pulled or tripped over.

Note: This heat press should not be set to exceed 200C. Setting the press temperature to above 200C may cause a fire hazard.

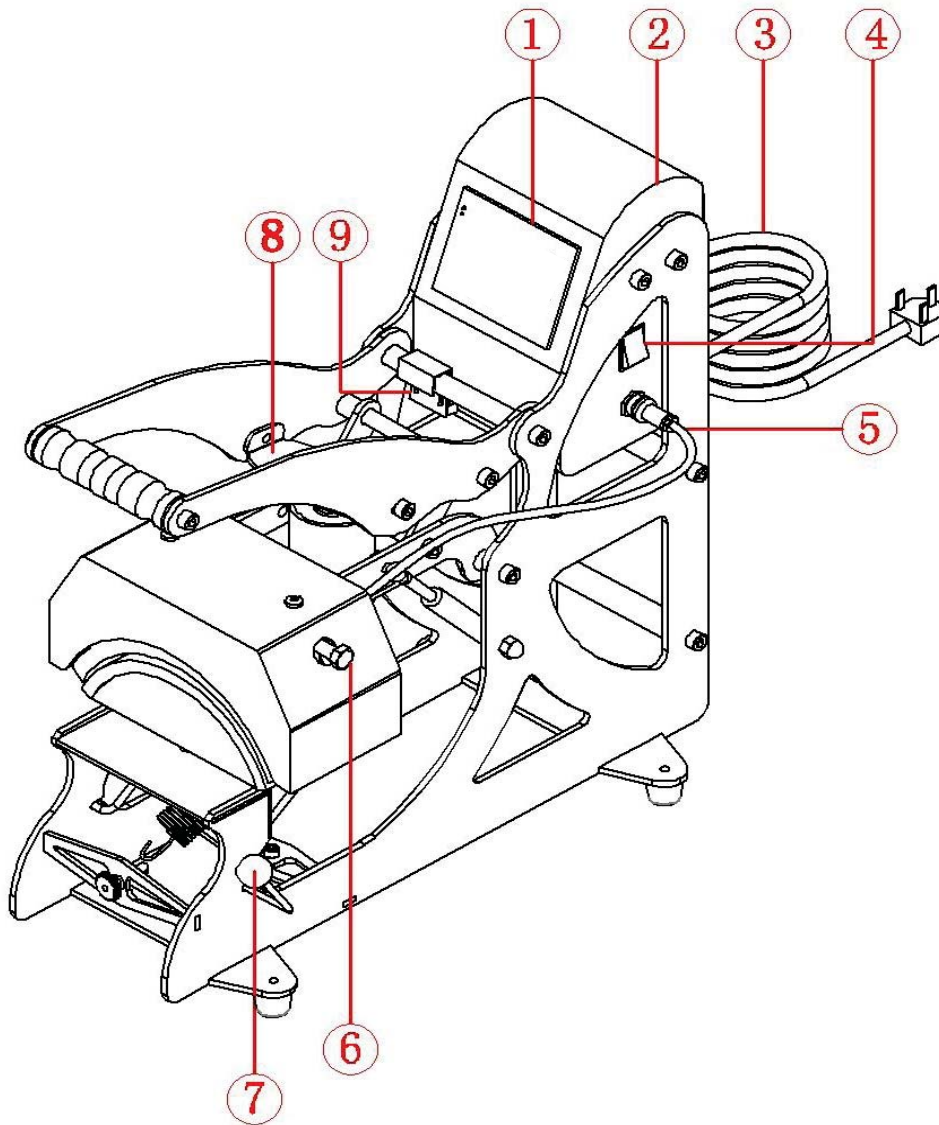
Be careful of the Auto Release feature. Press handle can injure body parts when autoreleasing. Stand clear of auto-release path.

Congratulations on your purchase of a Joto 5 in 1 Cap & Flat Press! In order to work professionally with the machine and start production, please make sure you read this manual carefully. Reproduction of this manual requires written consent from Joto. Errors and amendments of technical details excepted, all rights reserved. Joto is not liable for any direct or indirect damages caused by the use of this product.

Table of Contents

Safety.....	2
Introduction	3
Machine Parts Diagram	4
Setting Up Your Press.....	5
Operating Instructions	6
Cap & Flat Press Overview.....	7
Maintenance	8
Joto Sublimation/Transfer Vinyl Guide	8
Circuit Diagram.....	10
Expanded View	11
Contact	12

Machine Parts Diagram



1.) GY-06 Digital Controller

2.) Electric Case

3.) Power Cord

4.) Power Switch

5.) Heater Socket

6.) Connecting Screws

7.) Hat Rack

8.) Electromagnet Suck Plate

9.) Limit Switch

Setting Up Your Cap & Flat Press

Turning On Your Mug Press

Turn the Main Power Switch on. The Main Power Switch is at the right side of the heat press.

Current temperature, set temperature, current time, set time will display.



How to Read The Display

- 1.) Left side PV value = Current Temperature
- 2.) Right side PV value = Current Time
- 3.) Left side SV value = Set Press Temperature
- 4.) Right side SV value = Set Press Time



Setting Press Temperature

Press OK to start. Use the up and down arrows to choose to display in °F or °C.

°F stands for Fahrenheit

°C stands for Celsius

Once selection is made, press ok to save

Green set temperature value will flash.

Use the up and down arrows to set press temperature value. Press ok to save



Note: Setting the press temperature to above 200C may cause a fire hazard.

Setting Press Time

Green Set Time Value will flash

Use the up and down arrows to change the value.

Press ok to save the value.

Wait until the current temperature is the same as the set temperature before using. The press will beep once set temperature is reached. Close and open the press to stop the beeping



Operating Instructions

Pressing a cap

- 1.) Turn on the Power Switch
- 2.) Set the appropriate Press Temperature, and Time.
- 3.) Tape your imaged transfer/sublimation paper to your cap/substrate with heat tape.
- 4.) Set the pressure. To do this, place a blank cap/substrate into the cap press. Adjust the pressure knob at the bottom of the press until the cap fits snugly when press is closed. It is recommended that you use medium-high pressure for transfer papers and transfer vinyls. For sublimation, light pressure is required. Turn pressure knob counter-clockwise to raise the base plate (to increase pressure or turn the knob clockwise to lower the base plate (to decrease pressure)
- 5.) Wait until current temperature is the same as set temperature. Once the press is at temperature, place cap/substrate into the press. Close the press.
- 6.) Timer will start counting down. The press will beep when the set time has counted down to 3. The auto-release function will activate once timer reaches zero.
- 7.) Peel paper immediately or as suggested by the product instructions.

Note: Do not obstruct the heat press when auto release function is active. Auto release will be automatically activated after counter reaches zero, beware of moving parts.

Cap & Flat Press Overview



Technical Specs

Model No.:	E-HP-JCH-51
Machine Type:	AutoClam
Machine Size:	526mm x 500mm x 250mm
Printable Area Size:	80mm x 130mm x 10mm
Controller:	GY-04 Digital Controller
Voltage:	220v/1 Phase/120v/1P hase
Power:	0.6kw
Time Range:	0~999s
Maximum Temp:	437F (225C)
Packing Size:	620mm x 600mm x 350mm
Gross Weight:	25kg

Note: This heat press should not be set to exceed 200C. Setting the press temperature to above 200C may cause a fire hazard.

Maintenance

General Maintenance

Please switch off the machine and unplug the power cord when the machine is not in use.

To protect the heat platen, do not allow any hard surface objects to be in direct contact with the platen. This includes zippers, buttons, metal sublimation items. When pressing these items, place a protective sheet between the platen and the objects.

Please add the lubrication oil regularly on the joints. to prolong the life of your heat press. The frequency will depend on how often you use your machine.

The cooling fan will automatically start when the temperature of heat platen reaches 80C (176F). This helps to cool electrical parts and prolong the heat press.

The heat platen will cool down to room temperature if heat press stays unused for more than 30 minutes.

Note: This heatpress should not be set to exceed 200C. Setting the press temperature to above 200C may cause a fire hazard.

Heat Pressing Guide

MultiCut Ultra Matte

Temperature: 320F
Time: 20 seconds
Peel: Hot

MultiCut Flock Premium

Temperature: 320F
Time: 20 seconds
Peel: Hot

MultiCut Nylon

Temperature: 345F
1st Press Time: 3 seconds
2nd Press Time: 10 seconds

MultiCut Premium

Temperature: 320F
Time: 10 seconds
Peel: Hot

MultiCut Lustre

Temperature: 310-330F
Time: 15-20 seconds
Peel: Hot to Cold

MultiCut Style

Temperature: 310-330F
Time: 15-20 seconds
Peel: Hot to Cold

Heat Pressing Guide (continued)

Sublimation Items

Sublimatable Ceramic Tiles

Temperature: 400F
Time: 360-420 seconds
Peel: Hot
Method: Substrate face down
Image face up

Porcelain Ornaments

Temperature: 400F
Time: 180-240 seconds
Peel: Hot
Method: Substrate face down
Image face up

MousePads/CanCoolers

Temperature: 400F
Time: 35-45 seconds
Peel: Hot
Method: Substrate face up
Image face down

Coasters/Fabric Puzzles

Temperature: 400F
Time: 35-45 seconds
Peel: Hot
Method: Substrate face up
Image face down

Phone cover inserts

Temperature: 360F
Time: 120 seconds
Peel: Hot
Method: Substrate face down
Image face up

Unisub Metals

Temperature: 400F
Time: 60 seconds
Peel: Hot
Method: Substrate face up
Image face down

Unisub Plastics

Temperature: 400F
Time: 75-80 seconds
Peel: Hot
Method: Substrate face up
Image face down

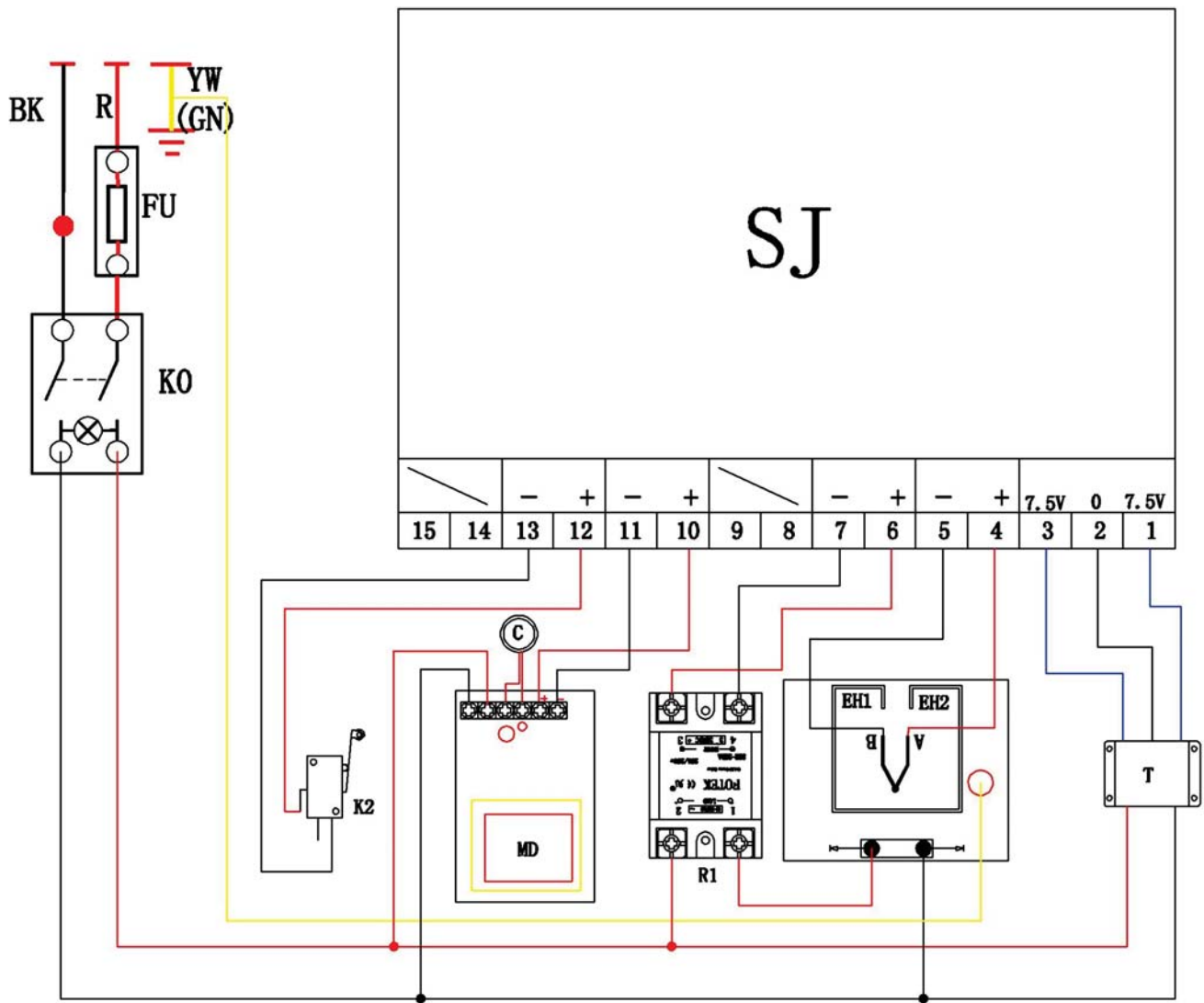
Unisub Wood

Temperature: 400F
Time: 75-80 seconds
Peel: Hot
Method: Substrate face up
Image face down

Unisub Plaques

Temperature: 400F
Time: 75-80 seconds
Peel: Hot
Method: Substrate face up
Image face down

Circuit Diagram



K₀:Power Swith

T:Transformer

EH1 EH2:Heating Pipe

C:Magnet

FU:Fuse

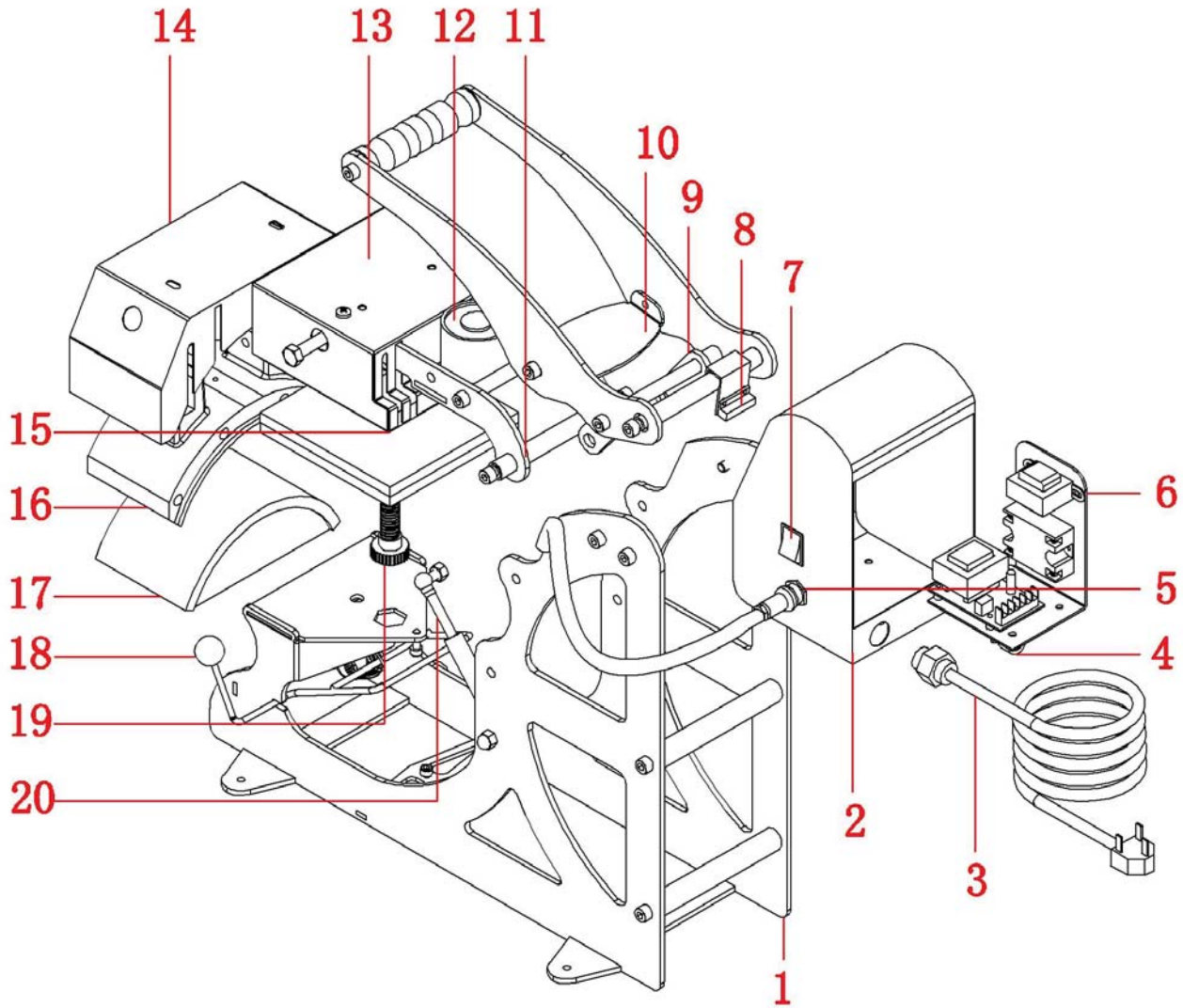
MD:Magnet Driver

K₂:Limit Switch

R1:Relay

SJ:Digital Controller

Expanded Diagram



- | | | |
|-----------------------------|------------------------------|--------------------------|
| 1. Machine Frame | 9. Connecting Piece | 17. Electromagnet |
| 2. Electric Case | 10. Electromagnet Suck Plate | 18. Heat Rack |
| 3. Power Cord | 11. Davit Arm | 19. Pressure Adjust Gear |
| 4. Fuse Holder | 12. Electromagnet | 20. Gas Spring |
| 5. Heating Plate Socket | 13. Flat Heat Platen Cover | |
| 6. Electrical Parts Bracket | 14. Cap Heater Cover | |
| 7. Power Switch | 15. Flat Heat Platen | |
| 8. Limit Switch | 16. Cap Heater | |

JOTOTM



Bringing images to lifeTM

www.jotopaper.com

Tel: 1-800-565-5686

Fax: 1-800-565-5622

Coquitlam, BC | Mississauga, ON

Blaine, WA | Las Vegas, NV | Nashville TN | Akron, OH