

Configuration Guide: CorelDRAW X5-X8 (Windows OS)

[W sawgrassink.com/Portal/Tech-Support/Technical-Documents/SubliJet-HD/SG400-SG800/Configuration-Guide-CorelDRAW-X5-X8.aspx](http://sawgrassink.com/Portal/Tech-Support/Technical-Documents/SubliJet-HD/SG400-SG800/Configuration-Guide-CorelDRAW-X5-X8.aspx)

[Home](#) / [SubliJet-HD](#) / Configuration Guide: CorelDRAW X5-X8 (Windows OS)



Before proceeding, ensure the correct Sawgrass Virtuoso SG400/800 printer driver and PowerDriver-v4 has been installed. For assistance with PowerDriver-v4 installation, refer to the [Installation and Configuration page](#).

The following instructions explain how to configure CorelDRAW X5-X8 for use with PowerDriver-v4 for the Sawgrass SG400 on a computer using Windows OS. Your screens and menus may differ depending on the version of software and operating system being used. However, the settings will be identical.

CorelDRAW Color Setup

1. Open a **New Document** in CoreIDRAW. See Figure 1.

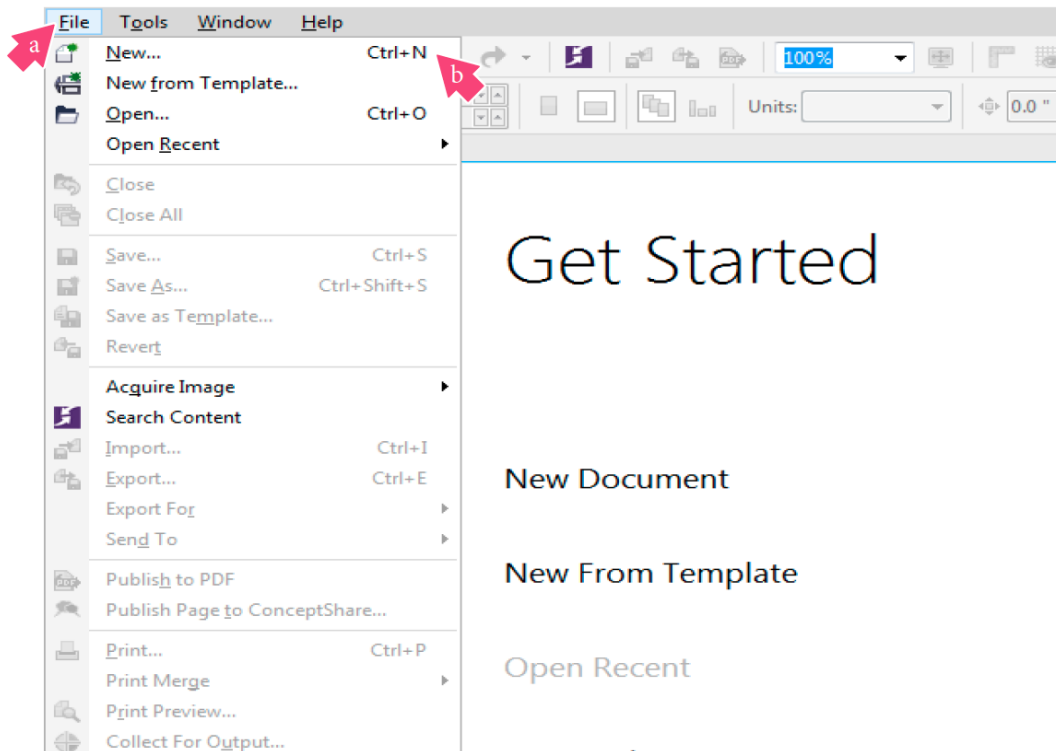


FIGURE 1

2. In the **Create a New Document** window match those shown below. See Figure 2.

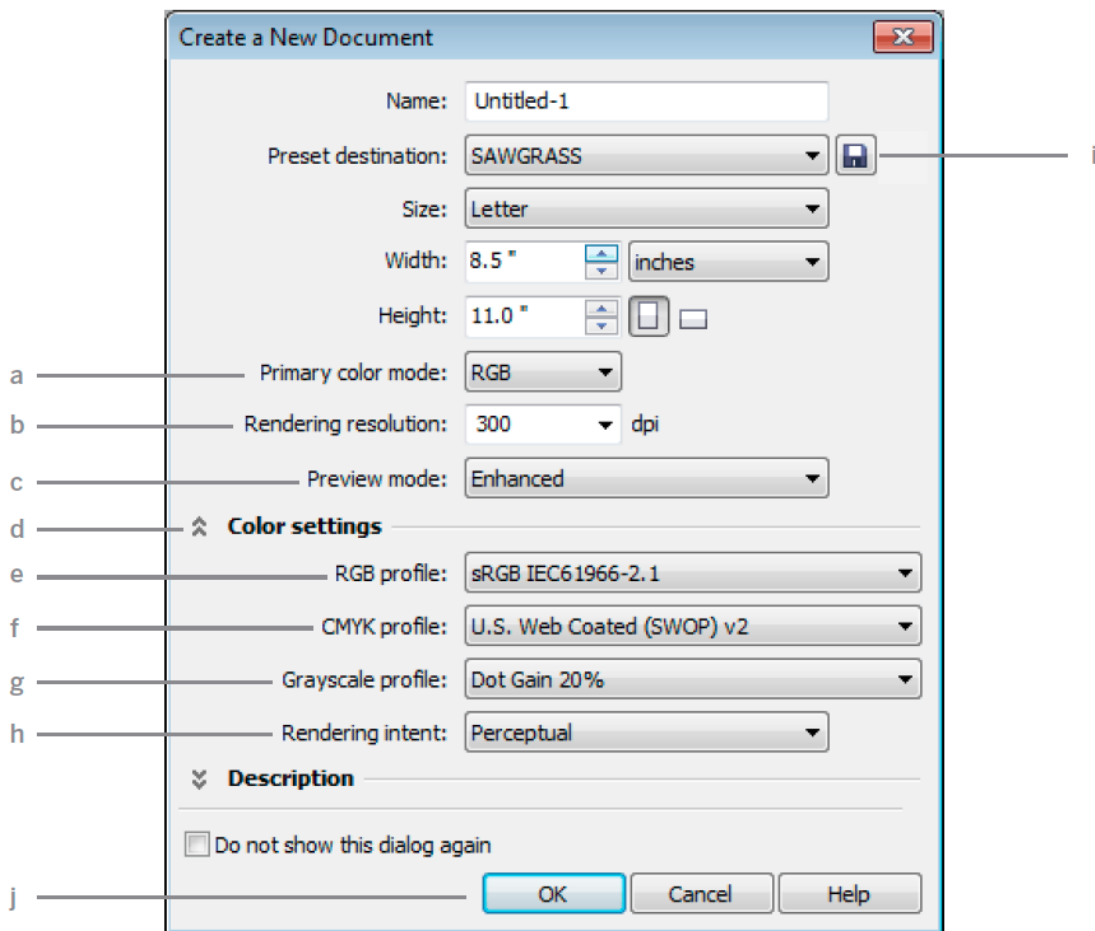


FIGURE 2

- a. Primary color mode: **RGB**
- b. Rendering resolution: **300**
- c. Preview mode: **Enhanced**
- d. Click the down arrow to view **Color Settings**
- e. RGB profile: **sRGB IEC61966-2.1**
- f. CMYK profile: **U.S. Web Coated (SWOP) v2**
- g. Grayscale profile: **Dot Gain 20%**
- h. Rendering intent: **Perceptual**
- i. Add Preset: **Name your new preset**
- j. Click **OK** to continue

3. In the Menu Bar, click **Tools > Color Management > Default Settings**. See Figure 3.

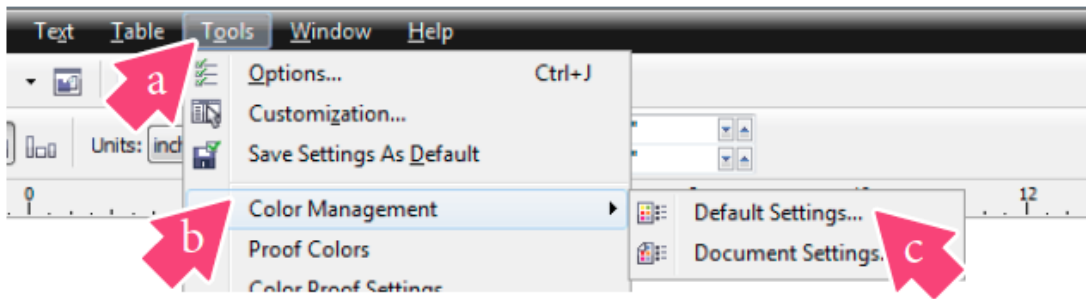


FIGURE 3

4. In the Default Color Management Settings window, select **Sawgrass** in the settings dropdown and confirm that your settings match those shown below, and click **OK**. See Figure 4.

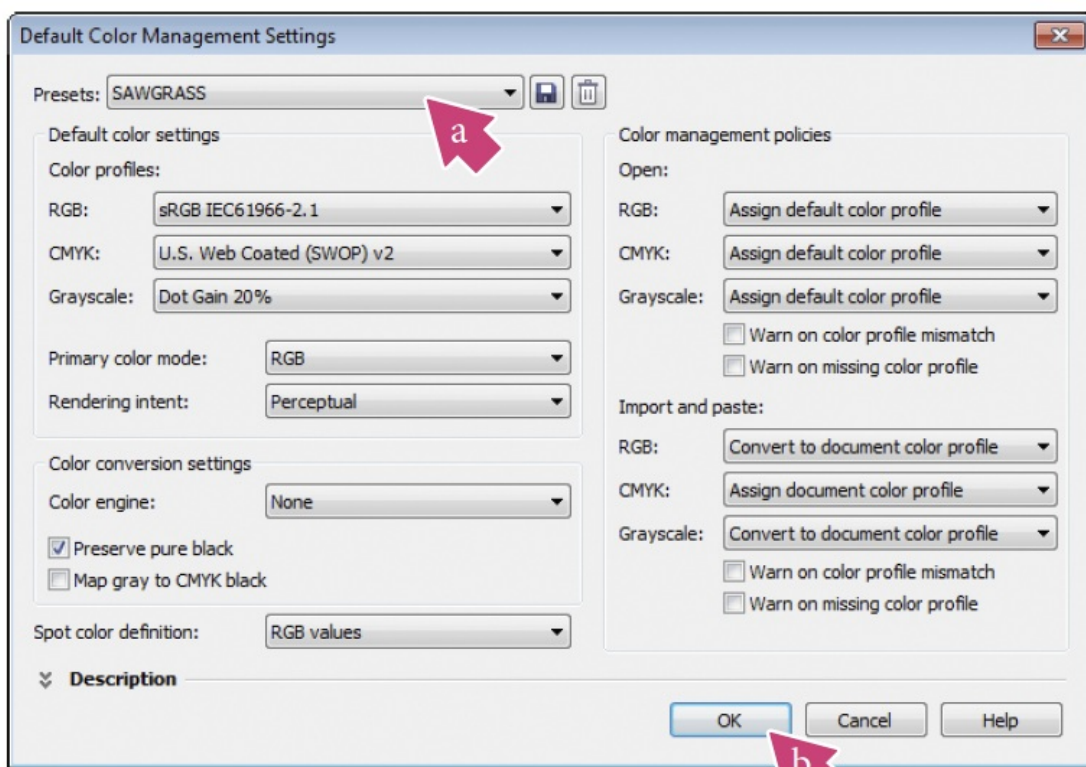


FIGURE 4

5. In the Menu Bar, click **Tools > Color Management > Document Settings**. See Figure 5.

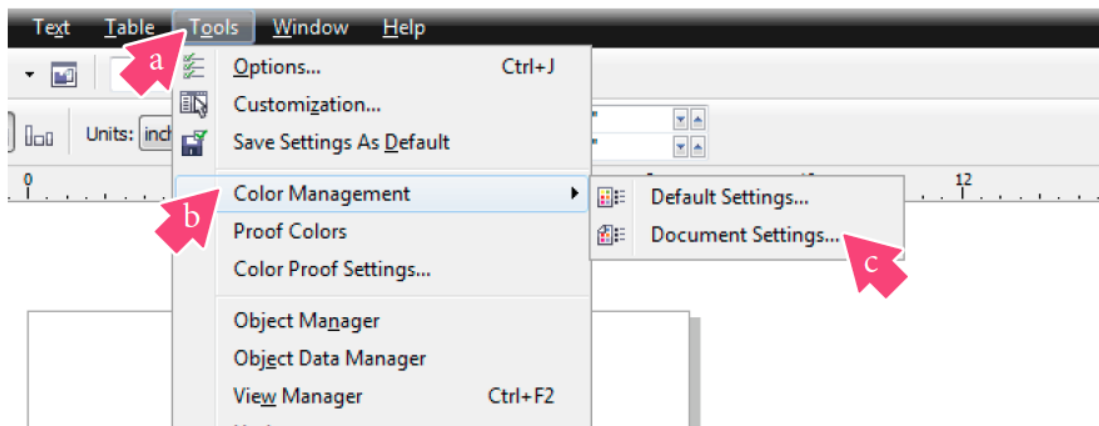


FIGURE 5

6. In the **Document Color Settings** window, match your settings to those shown below. See Figure 6.

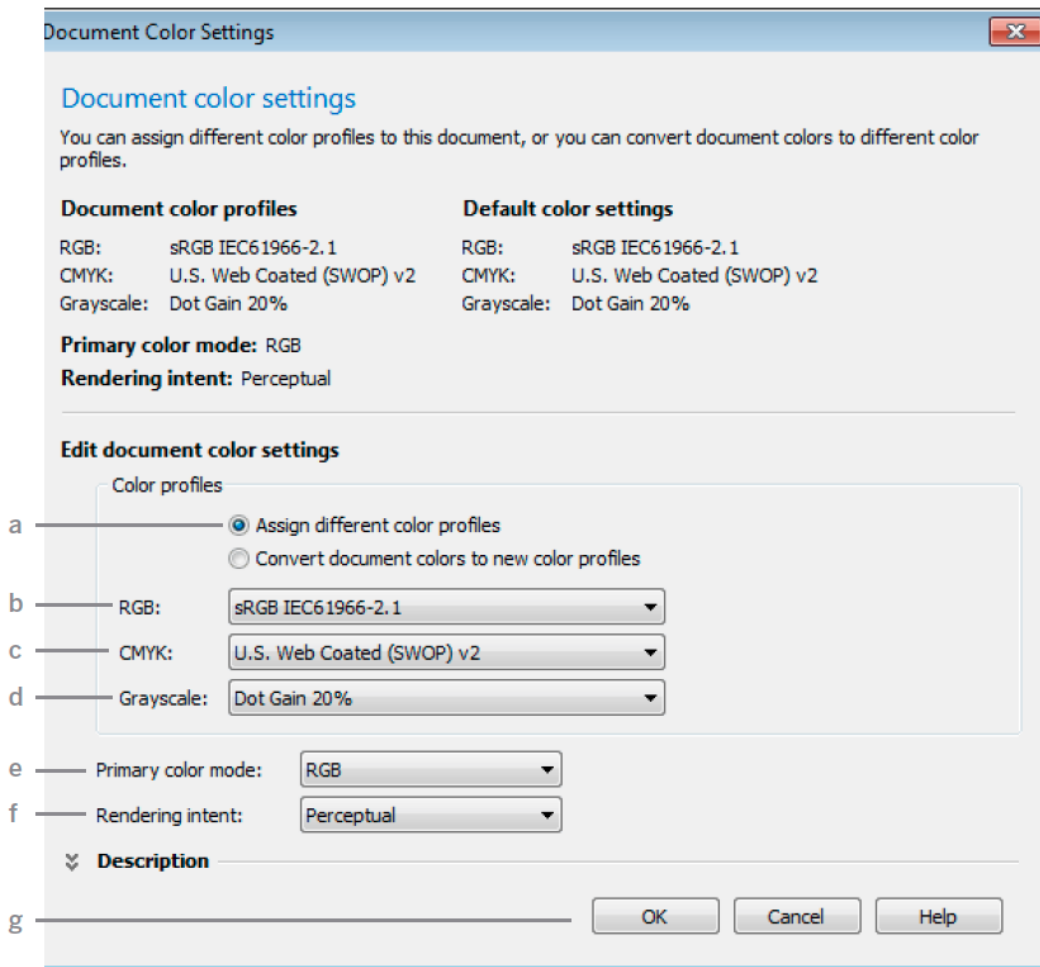


FIGURE 6

- a. Select the radio button: **Assign different color profiles**
- b. RGB: **sRGB IEC61966-2.1**
- c. CMYK: **U.S. Web Coated (SWOP) v2**
- d. Grayscale: **Dot Gain 20%**
- e. Primary color mode: **RGB**
- f. Rendering intent: **Perceptual**
- g. Click **OK** to continue

CorelDRAW Print Setup

7. After opening or importing an image with the correct color settings entered, you are now ready to print. In the Menu Bar, click **File > Print**. In the Print window, match your settings to the ones below. See Figure 7.

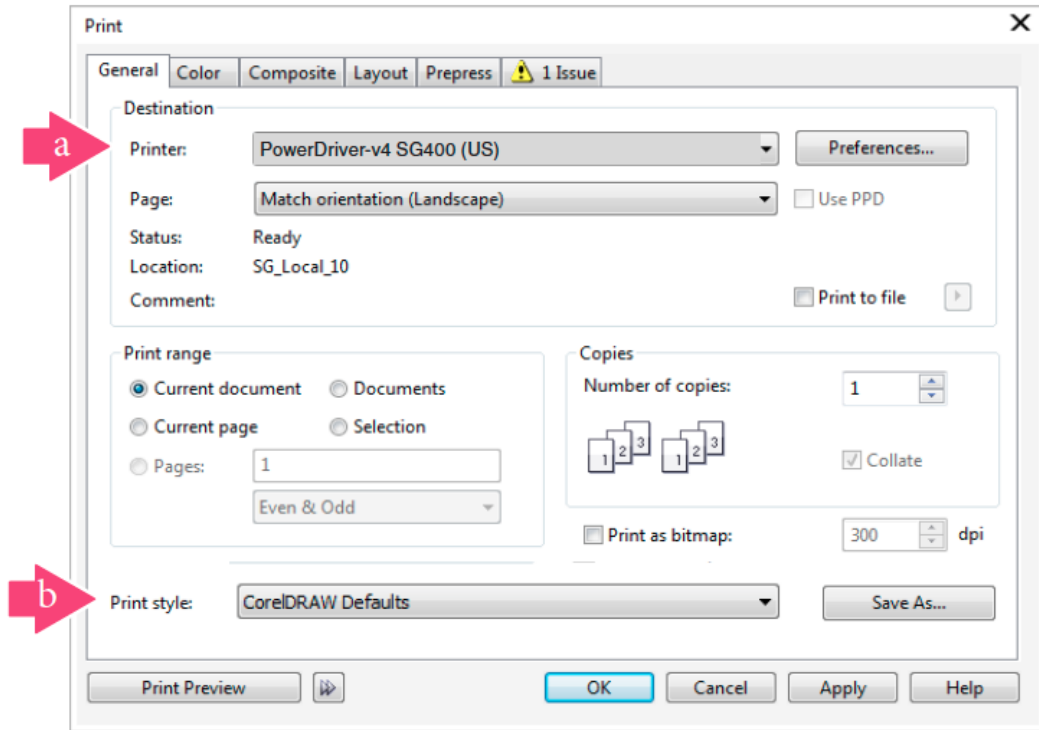


FIGURE 7

- a. Printer: **PowerDriver-v4 SG400/800 (US)**
- b. Print style: **CoreIDRAW Defaults**

 **Tips**

You can change the PowerDriver Printing Preferences by clicking “Preferences” in the Print Dialogue Box.

8. In the Print window, click the **Color** tab and match your settings to those shown below. See Figure 8.

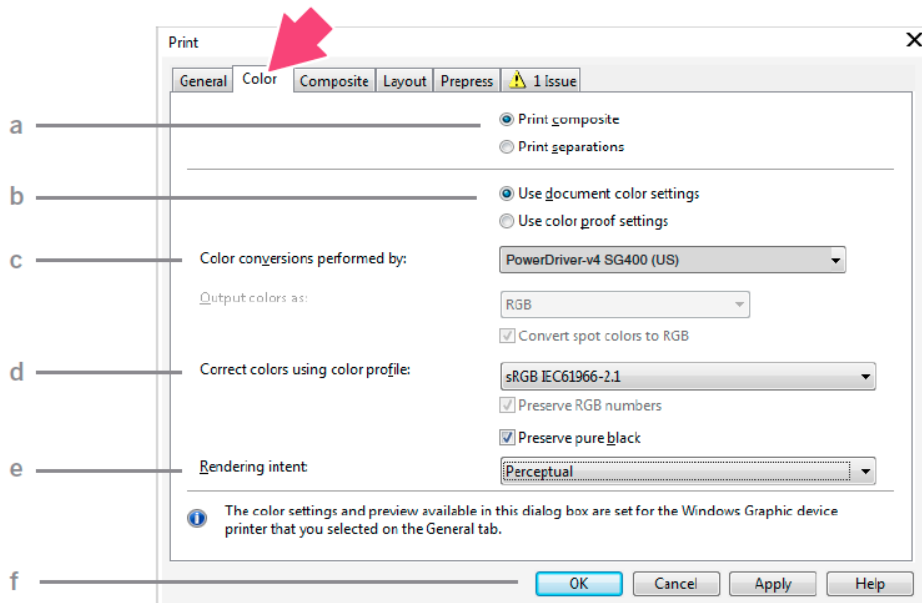


FIGURE 8

- a. Select the radio button: **Print composite**
- b. Select the radio button: **Use document color settings**
- c. Color conversions performed by: **PowerDriver-v4 SG400/800 (US)**
- d. Correct colors using color profile: **sRGB IEC61966-2.1**
- e. Rendering Intent: **Perceptual**
- f. Click **OK** when you are ready to print your image



Notice

If sRGB IEC61966-2.1 is not an option, then review Step 6 of this document.

CoreIDRAW setup is now complete. Be sure to select the PowerDriver-v4 SG400/800 (US) each time you print.

©2016 Sawgrass Inc. All rights reserved.

The information is based on information available at the time of publication and is subject to change without notice. Accuracy and completeness are not warranted or guaranteed.

The information contained in this document is confidential and provided under license. No part of this document may be reproduced or transmitted in any form or by any means, including electronic medium or machine-readable form, without the expressed written permission of Sawgrass Technologies, Inc.

Document 900035, Configuration Guide for SG400-SG800 CoreIDRAW X5-X8, Windows OS, Rev 2. See QMS master document for changes.